

SEVENTH DIVISION
LOTS ARE VARIOUS SIZES

- 1 BROWN
- 2 ROBINSON
- 3 MARTIN
- 4 MARTIN
- 5 WHEELER
- 6 WILEY
- 7 LADD
- 8 LADD
- 9 FEOLA
- 10 WILLIAMS/ESSEX
- 11 LAMER
- 12 CANE/SHATNEY
- 13 LAMER
- 14 GRAVES
- 15 RICHARDSON
- 16 HOLMES
- 17 ALDEN
- 18 MALLIN
- 19 WAGNER
- 20 SPALDING
- 21 RICHARDSON

FOURTH DIVISION
LOTS ARE 25' X 10'

- 1 EMERSON
- 2 PHILIPS
- 3 HARRIS
- 4 COOKSTON
- 5 HARRIS/DOTY
- 6 YOUNG
- 7 S GRAVES
- 8 TAYLOR
- 9 WHEELER
- 10 TEWKSBURY
- 11 UTTON
- 12 DUREY
- 13 MOORE/MORSE
- 14 HARRISMAN
- 15 TEWKSBURY
- 16 TAYLOR
- 17 COFF
- 18 DARLING

FIFTH DIVISION
LOTS ARE 25' X 10'

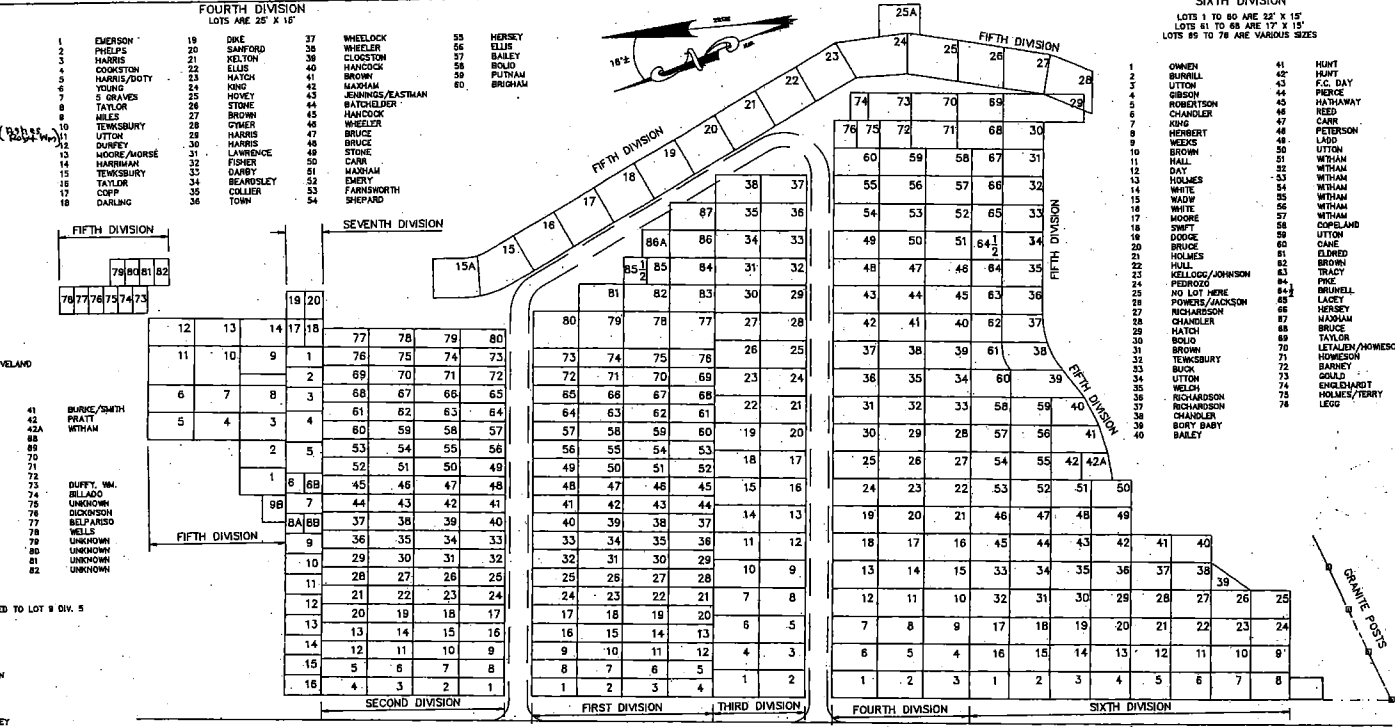
- 1 DWE
- 2 SANFORD
- 3 KELTON
- 4 ELLIS
- 5 HATCH
- 6 KING
- 7 HONEY
- 8 STONE
- 9 BROWN
- 10 CYMER
- 11 HARRIS
- 12 FISHER
- 13 LAWRENCE
- 14 STONE
- 15 DUNK
- 16 MADHAM
- 17 DERRY
- 18 FARNWORTH
- 19 SHEPARD
- 20 TOWN

SIXTH DIVISION
LOTS 1 TO 80 ARE 22' X 15'
LOTS 81 TO 88 ARE 17' X 15'
LOTS 89 TO 98 ARE VARIOUS SIZES

- 1 OWEN
- 2 BURRILL
- 3 LUTTON
- 4 GIBSON
- 5 ROBERTSON
- 6 CHANDLER
- 7 KING
- 8 HERBERT
- 9 WEEKS
- 10 BROWN
- 11 HALL
- 12 DAY
- 13 HOLMES
- 14 WHITE
- 15 WADW
- 16 WHITE
- 17 MOORE
- 18 SWIFT
- 19 BRUCE
- 20 HOLMES
- 21 KELLOGG/JOHNSON
- 22 PEDROZZI
- 23 NO LOT HERE
- 24 POWERS/JACKSON
- 25 LACEY
- 26 RICHARDSON
- 27 CHANDLER
- 28 HATCH
- 29 SOLID
- 30 BROWN
- 31 HOBSON
- 32 BUCK
- 33 UTTON
- 34 WELSH
- 35 RICHARDSON
- 36 CHANDLER
- 37 HATCH
- 38 BORY BABY
- 39 BAILEY

FIFTH DIVISION
LOTS ARE VARIOUS SIZES

- 1 AMDON
- 2 BOILEY
- 3 HATHAWAY
- 4 BOILEY
- 5 STOCKWELL/CLEVELAND
- 6 HONEY
- 7 STONE
- 8 RODGERS/BUCK
- 9 WAL
- 10 ALLEN
- 11 BEAUREGARD
- 12 RICHARDSON
- 13 STORY
- 14 RICHARDSON
- 15 BLANCHARD
- 16 SESSIONS
- 17 STRAW
- 18 PKE
- 19 CAMERON
- 20 JOHNSON
- 21 BROWN
- 22 MITCHELL
- 23 HAMBLET
- 24 TEMPLETON
- 25 WILEY
- 26 TEMPLETON
- 27 VAN
- 28 DUNHAM
- 29 BODIES REMOVED TO LOT 9 DIV. 5
- 30 WILSON
- 31 DRINKWATER
- 32 CLARK
- 33 HERSEY
- 34 EMERSON
- 35 CUSHY/MARTIN
- 36 CROSS/WILSON
- 37 MADEY
- 38 STYMOS
- 39 HUNT
- 40 WELSH/WOODLEY



FIRST DIVISION
LOTS 1 TO 74 ARE 25' X 10'
LOTS 75 TO 80 ARE 25' X 20'
LOTS 81 TO 86 ARE 25' X 15'

- 1 HUTCHINSON
- 2 LATHROP/WORTHEN
- 3 COPPER
- 4 CROFT/VAL
- 5 HANKSON
- 6 SMITH
- 7 REED
- 8 SMITH
- 9 LADD
- 10 NEWTON
- 11 ALEXANDER
- 12 WRIGHT/RICHARDSON
- 13 KELLOGG
- 14 SPEAR
- 15 HAMBLET
- 16 HUTCHINSON
- 17 REED
- 18 BROWN
- 19 MORLEY
- 20 TEMPLETON
- 21 RASCO
- 22 JOHNSON
- 23 JOHNSON
- 24 ANDREWS
- 25 HARRIS
- 26 WATSON
- 27 RAHSAT
- 28 HALL
- 29 JONES
- 30 FRIED

SECOND DIVISION
LOTS ARE 25' X 10'

- 1 WATSON
- 2 CUSHMAN/ALAMAM
- 3 HANKSON
- 4 HANKSON
- 5 COPP
- 6 SMITH
- 7 REED
- 8 SMITH
- 9 LADD
- 10 NEWTON
- 11 ALEXANDER
- 12 WRIGHT/RICHARDSON
- 13 KELLOGG
- 14 SPEAR
- 15 HAMBLET
- 16 HUTCHINSON
- 17 REED
- 18 BROWN
- 19 MORLEY
- 20 TEMPLETON
- 21 RASCO
- 22 JOHNSON
- 23 JOHNSON
- 24 ANDREWS
- 25 HARRIS
- 26 WATSON
- 27 RAHSAT
- 28 HALL
- 29 JONES
- 30 FRIED

THIRD DIVISION
LOTS ARE 25' X 15'

- 1 FISHER
- 2 BRUCE
- 3 GRAVES
- 4 STONE
- 5 DUGAR
- 6 DUGAR
- 7 ABBOTT
- 8 2 GRAVES
- 9 HITCHCOCK
- 10 HANCOCK
- 11 HAMBLET
- 12 STEVENS
- 13 CLARK
- 14 DALEY
- 15 GRAVE
- 16 TAYLOR
- 17 CONANT
- 18 ROOD
- 19 STONE
- 20 ROBINSON
- 21 FROST
- 22 BROWN
- 23 BUCK
- 24 HATCH
- 25 BUCK
- 26 HALL
- 27 COFFIN
- 28 HOLMES
- 29 CAMERON
- 30 DALEY
- 31 DIBBLE/GREGORY
- 32 KEMP

FOURTH DIVISION
LOTS ARE 25' X 15'

- 1 RUSSELL
- 2 HANCOCK
- 3 FLINN
- 4 BRUCE/FLINN
- 5 GRAVE/GRANDMA
- 6 KENT
- 7 VAL
- 8 HAYFORD
- 9 RICHARDSON
- 10 DODGE
- 11 DODGE
- 12 BELLVILLE
- 13 YOUNG
- 14 HANLITY
- 15 BROWN
- 16 HURLBURT
- 17 HERSEY
- 18 HARRISMAN

FIFTH DIVISION
LOTS ARE 25' X 15'

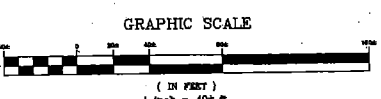
- 1 ALEXANDER
- 2 BROWN
- 3 HOLMES
- 4 RICHARDSON
- 5 FROST
- 6 RICHARDSON
- 7 RICHARDSON/TEMPLETON
- 8 RYAN
- 9 BREWSTER
- 10 ABBOTT
- 11 COLLEY
- 12 ORDWAY
- 13 SLAYTON
- 14 HURLBURT
- 15 HERSEY
- 16 HARRIS

SIXTH DIVISION
LOTS ARE 25' X 15'

- 1 FENN
- 2 BROWN
- 3 HOLMES
- 4 PILBRICK
- 5 KING
- 6 HARRIS
- 7 JACOBE
- 8 GRAY
- 9 KELLOGG
- 10 KELLOGG
- 11 PERLO
- 12 RIOR
- 13 GRAY
- 14 UTTON
- 15 HOBSON
- 16 FISHER/WITHAM
- 17 GRAY
- 18 SENTER

VT. ROUTE 12

TO WORCESTER VILLAGE



NOTE:
THIS MAP WAS COMPILED FROM INFORMATION SUPPLIED BY THE WORCESTER CEMETERY COMMISSIONERS AND DOES NOT REPRESENT AN ACTUAL FIELD SURVEY.

WORCESTER VILLAGE CEMETERY
WORCESTER, VERMONT

CEMETERY COMMISSIONERS:
STEVEN LANG
EARLENE FORBES
PAUL WHITE

MICHAEL J. PATTERSON
MIDDLESEX, VERMONT

DATE NOV. 1998
SCALE 1" = 40'±